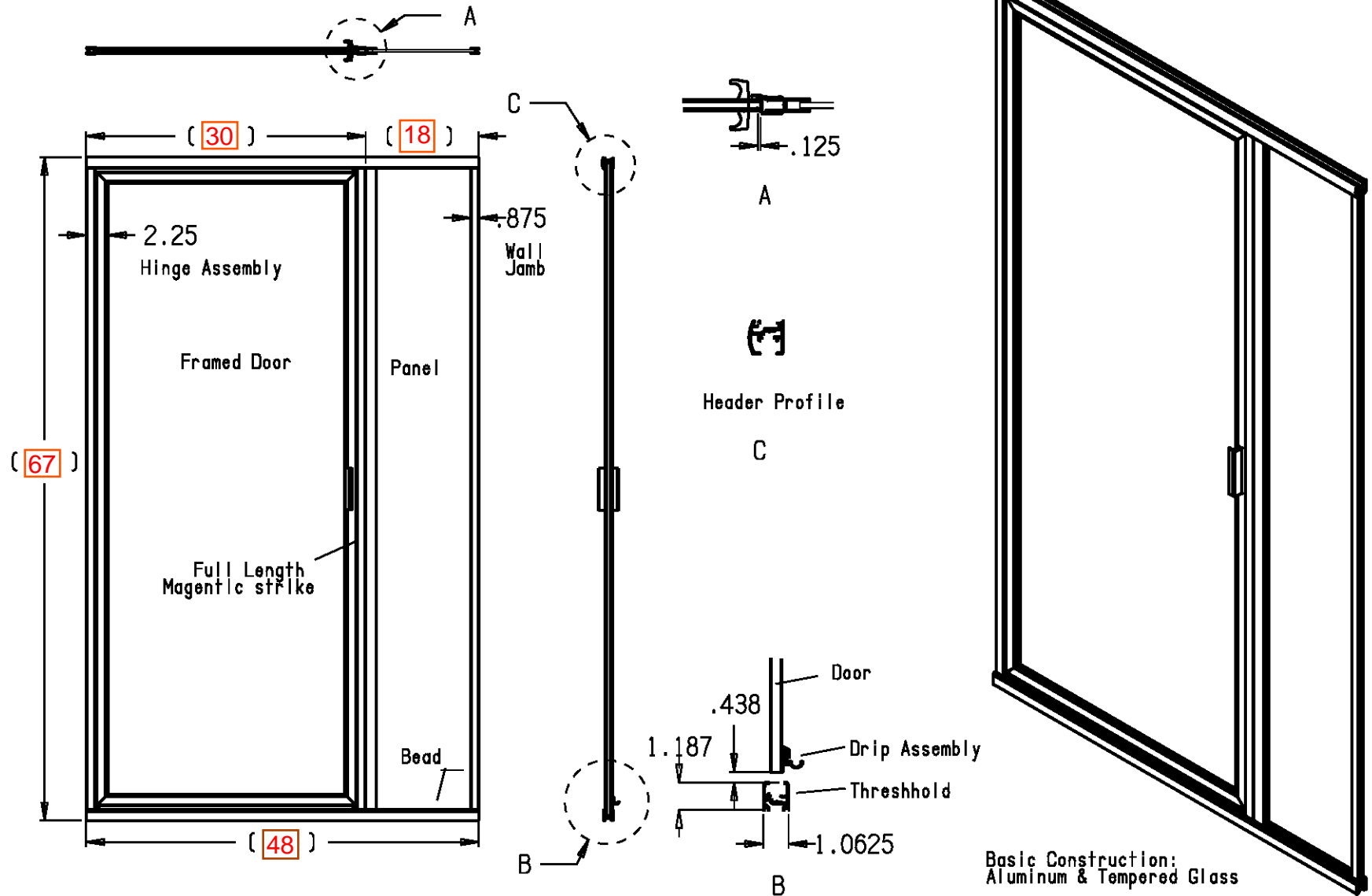


Crystalline Framed Hinge w/ Inline Panel



JOB NAME / LOCATION : **Chamblee Gateway**

COLOR : **Clear / Silver**

QUANTITY :

APPROVED BY : _____

 **Southeastern Aluminum Products, Inc.**

| | | |
|--------|-------------------|-------------------|
| Sizes: | Unit Width (W) = | Door Width (D) = |
| | Unit Height (H) = | Panel Width (P) = |

DATE : _____